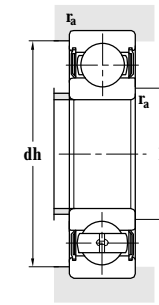
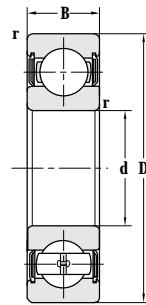
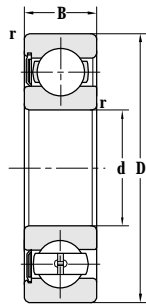


Deep Groove Ball Bearing (With Seals)



d 28–35 mm



Principal dimensions				Basic load ratings		Limit speed ratings
d	D	B	r _{min}	C _r	C _{or}	Grease
mm				kN		r/min
28	68	18	1.1	23.6	13.1	6300
	68	18	1.1	23.5	13.0	6300
30	55	13	1	13.2	7.96	8000
	55	13	1	13.2	7.96	12000
	62	16	1	19.5	11.3	10000
	62	16	1	19.5	11.3	10000
	62	16	1	19.5	11.3	10000
	62	16	1	19.5	11.3	10000
	62	16	1	19.5	11.3	10000
	62	16	1	19.5	11.3	10000
	62	16	1	19.5	11.3	10000
	62	20	1	19.0	11.0	10000
	72	19	1.1	28.4	15.4	6300
	72	19	1.1	28.4	15.4	6300
	72	19	1.1	28.4	15.4	6300
	72	19	1.7	28.4	15.4	6300
	72	19	1.7	28.4	15.4	6300
	75	20	0.5	25.3	17.5	6300
75	20	0.5	32.5	18.0	9000	
32	80	23	0.5	36.5	20.0	9000
	72	25	1	26.7	15.0	9400
	75	20	1.5	22.0	16.0	8800
	80	23	0.5	27.9	19.6	8400
	80	23	0.3	36.5	19.6	8400
35	62	14	1	16.0	10.3	7000
	62	14	1	16.0	10.3	7000
	64	14	1	16.0	10.3	7000
	72	17	1.1	26.0	14.7	6300
	72	17	1.1	26.0	14.7	6300
	72	17	1.1	26.0	14.7	6300
	72	17	1.1	26.0	14.7	6300
	72	17	1.1	26.0	14.7	6300
	72	17	1.1	26.0	14.7	6300
	72	17	1.1	26.0	14.7	6300
	80	21	1.5	33.4	19.2	6000

Designations	Abutment and fillet dimensions				Weight
	D _{smin}	D _{smax}	dh _{max}	r _{amax}	
	mm				kg
63/28-2RS-DZ	34.5		61.5	1	0.302
63/28-RS	34.5		61.5	1	0.300
6006-2RS	35		50	1	0.118
6006-2RZ	34.6		50.4	1	0.118
6206-RS	35		56	1	0.212
6206-2RS	35		56	1	0.214
6206-2RS-DZ	35		56	1	0.214
6206-RS2	35		56	1	0.212
6206-2RZ	35	38	56	1	0.224
6206-2RS1/C3-DZ	35	38	56	1	0.200
62206-2RS	35	38	56	1	0.255
6306-2RS	36.5	41.5	65.5	1	0.355
6306-RS	36.5	41.5	65.5	1	0.353
6306-2RZ	36.5	41.5	65.5	1	0.355
6306-2RZ/YA6	36.5	41.5	65.5	1	0.355
6306-2RS/YA6	36.5	41.5	65.5	1	0.338
6306X3-2RSN/Y	36.5		68.5	0.5	0.475
450706K	36.5		68.5	0.5	0.474
4507/32KU	37.5		72.5	0.5	0.534
66/32WB1-2RSZ/C9	39		69.5	1	0.408
63/32-2RSN	41.5		65.5	1.5	0.413
63/32X3-2RSN/C9Y	37.5		72.5	0.5	0.534
63/32X3-2RSN/HAY	35		77	0.3	0.534
6007-2RZ	39.6		57.4	1	0.169
6007-2RS	39.6		57.4	1	0.175
6007X1-2RS/C3	39.6		57.4	1	0.196
6207-RS	41.5		65.5	1	0.296
6207-RS2	41.5		65.5	1	0.296
6207-2RS2	41.5		65.5	1	0.299
6207-2RS	41.5		65.5	1	0.299
6207SC-2RS	41.5		65.5	1	0.401
6307-RS	43		72	1.5	0.480